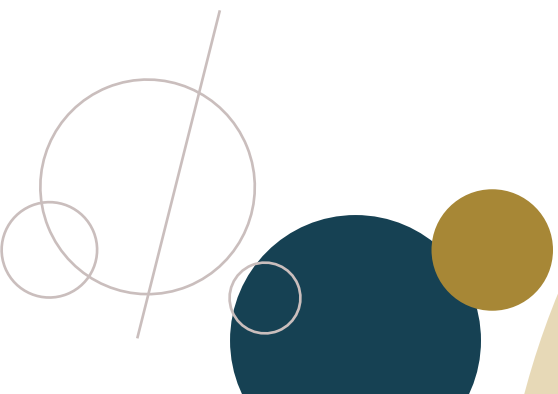


**2024** CHIPPEWA FALLS  
AREA CHAMBER  
**MEMBERSHIP  
DIRECTORY**





# Caring for you in Chippewa Falls

Prevea Health and HSHS St. Joseph's Hospital in Chippewa Falls are here and ready to care for you, when you need it.

Our partnership allows us to offer access to primary care and multiple specialties, as well as urgent care and emergency services in Chippewa Falls and across the Chippewa Valley.

**Schedule an appointment by calling (888) 277-3832.**

[prevea.com](https://prevea.com)  
[stjoeschipfalls.org](https://stjoeschipfalls.org)





# FROM OUR CHAMBER PRESIDENT

## ALLYSON WISNIEWSKI

The Chippewa Falls Area Chamber of Commerce is dedicated to fostering an environment where businesses not only survive but thrive, contributing to the overall prosperity of our community. Thanks to the more than 725 Chamber members that support this ongoing effort.

Witnessing the collaboration among our member businesses is heartening. The partnerships and mutual support are a testament to the strength of our community. By working together, we not only ensure the success of individual businesses but the overall prosperity of Chippewa Falls.

Attracting and retaining both businesses and talented individuals to our community is a pivotal part of our work that will ensure continued growth in the Chippewa Falls area. We are actively engaging in workforce initiatives to make our community an appealing destination for companies looking to establish roots and grow. Our collaborative efforts with local government, business leaders, and other stakeholders continue to create an environment that supports advancement, entrepreneurship, and sustainable growth.

The Chamber is committed to our vision to inspire success, provide advancing opportunities, and foster fun and professional collaboration for our business members. We will continue to provide relevant programming, economic and workforce development, tourism, and networking events.

Thank you to each member of the Chamber for your dedication and commitment to the Chamber and our community. The future holds great promise, and together, we will continue to chart a course toward prosperity, growth, and success.



Doing the things most people think just happen.

# FROM OUR BOARD CHAIR

**COURTNEY BERG, CCFBANK**

Dear Chamber Members,

Welcome to the 2024 Chippewa Falls Area Chamber of Commerce Membership Directory and Resource Guide. In the following pages, you'll discover our impactful initiatives in economic advocacy, workforce development, networking, annual events, education, tourism, and other avenues through which we support our member businesses.

As I begin my tenure as Chair of the Chippewa Falls Chamber Board of Directors, I am pleased to draw your attention to our updated mission, vision, and newly established values outlined below. The sentiment of what the Chamber is has stayed the same, but with new leadership and many new staff, we took time to appreciate how we had gotten here and to envision where we are going.

I invite you to be a part of us, helping to live our mission, work towards our vision, and to embody our values. Participate in Chamber events and programs, advocate for both the chamber and member businesses. Together, as we collaborate for the benefit of Chippewa Falls, we nurture success and create opportunities for all.

Our diverse board members and dedicated staff are committed to the Chamber's ongoing success. I am confident that we will carry the momentum through 2024. Your active participation, ideas, and feedback are welcome as we collectively shape a future that enhances the prosperity and well-being of our community.

I want to thank my fellow board members for their passion and dedication to strengthening the Chippewa Falls area. Let's continue to make it an exceptional place to live, learn, work, and play.

Thank you for being a valued Chamber member!

## CONTENTS

- 3 - President's Letter
- 4 - Board Chair's Letter
- 4 - Vision and Mission
- 5 - Meet the Team
- 12 - Members Alphabetically
- 26 - Members by Category
- 65 - Who's Who

## OUR MISSION

Representing our members by supporting and encouraging a vibrant and prosperous business community.

## OUR VISION

To be an essential partner and leader for the business community. Inspiring success, advancing opportunities and fostering fun and professional collaboration.

## OUR VALUES

Leadership | Integrity | Connection | Advancement | Collaboration



# OUR TEAM

## EXECUTIVE COMMITTEE

Courtney Berg, *Chair*  
CCFBank

Dave Lemanski, *Chair-Elect*  
Chippewa River Industries

Greg Field, *First Vice Chair*  
W.S. Darley & Co.

Mike Stoffel, *Treasurer*  
Ayres

Scott Smith, *Immediate Past Chair*  
Nordson EDI

## BOARD OF DIRECTORS

Andrew Daniels  
Miron Construction Co., Inc.

Mike Farrow  
Northwestern Bank

Greg Field  
W.S. Darley & Co.

Jason Forman  
Blain's Farm & Fleet

David Goldbach  
Alliance Plastics

Cathy Leibke  
Holiday Inn Express & Suites

Jennifer Lindstrom  
Mason Companies, Inc.

John Monarski  
Ex-Officio | City of Chippewa Falls

Timm Sandstrom  
Royal Credit Union

Karin Schuler  
Premium Waters, Inc.

Riley Wogernese  
Cobblestone Hotel & Suites

Cayci Young  
Dove Healthcare

## AMBASSADORS

Trina Banks  
B & G Liquor Warehouse

Stephani Bonner  
Chippewa Falls Harley Davidson

Hannah Cowan  
Trust Point Financial

Mike Crawford  
Access Security, Inc.

Mike Farrow  
Northwestern Bank

Sarah Gordee  
Hookd Promotions

Tom Hubbard

Jen Moen  
Nicolet National Bank

Rob Mooney  
Alliance Plastics Corp

Carrie Nielsen  
Royal Construction, Inc.

Jackie Sadler  
Chippewa County

Zach Schimmel  
Fries Financial Group

## CHAMBER STAFF

Allyson Wisniewski  
President

Angela Kapp  
Membership Director

Sue Leonard  
Tourism Director

Lindsey Nilsestuen  
Administrative Assistant

Mandy Nunes  
Workforce Development Director

Ellie Peabody  
Communication & Marketing Manager

Missy Prissel  
Programs & Partnership Director

Tom Seaholm  
WNB Financial

Tami Severson  
Spectrum Business

Tyler Sperry  
Mower Insurance

Mike Stoffel  
Ayres

Tiffany Thompson  
Leinenkugel's Leinie Lodge

Tony Willkom  
Royal Credit Union

# WHO WE REPRESENT



## 720

### TOTAL MEMBERSHIP

Our members represent a variety of industries including, Manufacturing, Business, Hospitality, Real Estate, Health, Education and Agriculture.

## 57

### NEW MEMBERS

We continue to provide value to businesses and have grown our membership. We appreciate their investment in the community and in us.



## 19,000+

### EMPLOYEES REPRESENTED

Chippewa Falls is comprised of many different industries and within that many professions. What's a business if not the people that work for it?

## 37

### RIBBON CUTTINGS & GROUND BREAKINGS

Our local economy is thriving as businesses and individuals continue to invest in our area. Adding new jobs, new tax base, and greater prosperity for our community.

## Numbers



1700

We reach over 1700 business professionals with our monthly Member Memo E-News.



80%

80% of the businesses the Chamber represents, have 25 or fewer employees.

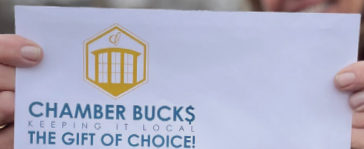
## NEARLY

# \$100,000

in Chamber Buck\$

More than **5,000** Chamber Buck\$ checks were printed annually and are accepted at more than 300 member businesses. This is a small but mighty way to support our local economy and chamber members.

These are a great gift for staff, teachers, family and friends!



## WHAT'S NEW?

**CHAMBER CONNECTION!** We have created a news section of our website that will be utilized to publish relevant content for and/or about our members. This will be a digital space to see what's new with Chamber businesses and any relevant Chamber news or updates that are important for our members and the greater Chippewa Falls community to know.





# ECONOMIC ADVOCACY

## State of the City

The State of the City Luncheon provided **68** attendees the opportunity to hear about important issues facing the City of Chippewa Falls directly from the Mayor and city personnel.

This was a great chance to meet the mayor and city staff to learn more about budgets, development, transportation projects, parks and recreation programs, and public safety.



### Chippewa Valley Rally

This year, **100** attendees joined this annual event organized by the Chippewa Valley Chamber Alliance, comprised of the Chippewa Falls, Eau Claire, and Menomonie Chambers of Commerce. Business and community leaders traveled to Madison to advocate for our region's economic priorities.

# 19

STUDENTS RECOGNIZED  
**EXCELLENCE  
IN EDUCATION**

# 125

ATTENDEES  
**SCHOOLS 2  
SKILLS TOURS**

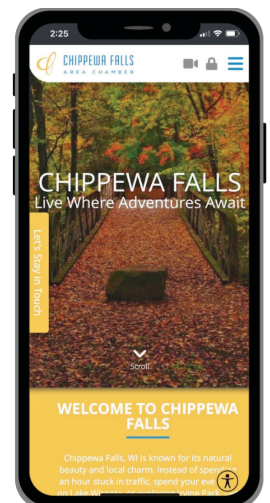
# 200

ATTENDEES  
**FINANCIAL  
LITERACY**

IN PARTNERSHIP WITH  
ROYAL CREDIT UNION

## WORKFORCE DEVELOPMENT

Our workforce digital marketing campaign aims to attract skilled workers to relocate to our area. In 2023 there were **2.8 million** impressions and **34,000** visits to our website. The goal of this campaign is to promote the greater Chippewa Falls area and work toward attracting talent to our community. For those who have subscribed through this campaign, we regularly send updates sharing why Chippewa Falls is a great place to live, work, and play.



## LEADERSHIP CHIPPEWA FALLS

The 2023 class had a total of **22** graduates. Each month, the class spent time learning about a sector of life and business, as well as gaining a broad understanding of issues and challenges facing our community. They also meet key leaders in these sectors, discuss the community challenges and determine how these challenges might be resolved.





# NETWORKING EVENTS



## BUSINESS AFTER HOURS

Business After Hours events are held throughout the year to bring members together for a casual networking experience where member businesses are given the opportunity to highlight their business. We had more than **600** attendees throughout 2023.



## COFFEE & COMMERCE

Coffee & Commerce events are held throughout the year as morning networking opportunities with other business professionals over fresh coffee. We had more than **400** attendees in 2023. This event generally takes place the second Friday of each month.



## WOMEN LUNCHEON

The Women to Women Luncheon featured a panel of local female business owners and leaders who shared their stories and inspired more than **90** women to stay positive while navigating their own busy lives.



## CHAMBER 101

Chamber 101 is a virtual program that occurs quarterly and is designed to help members learn about and take advantage of ALL the benefits of their Chamber Membership.



## YOUNG PROFESSIONALS

Young Professionals of the Chippewa Valley is a group of **350+** young business professionals that network and engage through volunteer work and advocacy opportunities. This program is in partnership with the Eau Claire Chamber.





# ANNUAL EVENTS



## ANNUAL MEETING

Our Annual Meeting brought together more than **320** guests.

We celebrated the Chippewa Falls Business Community with a theme of “Stronger Together.” The business community is stronger with collaboration.



## NONPROFIT ROUNDTABLE

The annual Nonprofit Roundtable Discussion brings local nonprofit organizations together for a chance to meet each other and share issues, ideas, and future plans. This year’s event featured a focus on Marketing and had **44** attendees.



## FARMER APPRECIATION DINNER

Celebrating the dedication and efforts of Chippewa Falls’ local agricultural community. Our heartfelt gratitude goes out to the hardworking farmers in our community and this dinner served more than **1,800** meals.



## GOLF OUTING

**144** golfers plus sponsors, ambassadors, and staff enjoyed a beautiful day networking on the greens. This is one of our members’ favorite networking events of the year.

## CHAMBER AMBASSADORS

You’ll often see our Chamber Ambassadors at our networking and annual events. This group of individuals is truly our boots on the ground. They help communicate the mission of the Chamber to new and existing members and encourage all members to get involved. They are the friendly faces in red at our Chamber events and serve as a liaison between Chamber staff and members. Thank them for the countless hours they volunteer throughout the year!



## OKTOBERFEST CHIPPEWA FALLS

In its 20th year, Oktoberfest celebrated a milestone in its tribute to German heritage. The festivities took place at the Northern Wisconsin State Fairgrounds, where Oktoberfest burst to life with an abundance of family-friendly games, spirited music, delectable German foods, and so much more!

This year, the spotlight was on the brand-new Bierhaus, showcasing a selection of four German tap beers. Adding to the excitement, Scott and Wendy Sullivan were honored as the 2023 Festmeister and Festmeisterin.



# TOURISM



GO Chippewa County represents the Destination Marketing Organization for Chippewa County. Our goal is to attract new and returning visitors to the area to support our local economy.

MORE THAN

# 13,000

TRAVEL GUIDES

DISTRIBUTED

to state-wide visitors centers, and at local events and businesses

MORE THAN

# 16,000

FOLLOWERS

ACROSS PLATFORMS

**130,000+** Facebook Reach in 2023

**8,000+** Instagram Reach in 2023



EMAIL NEWSLETTER

MORE THAN

# 9,000

SUBSCRIBERS

10

# ECONOMIC IMPACT

Chippewa County's tourism experienced a record year in 2022, driving \$174 million in total economic impact which benefitted our communities, businesses and workers. Tourism also supported 1,403 full and part-time jobs in Chippewa County.



MORE THAN

# \$174 MILLION

IN ECONOMIC IMPACT

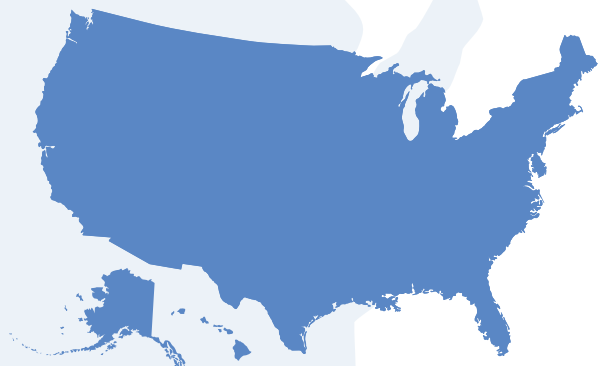
[gochippewacounty.com](http://gochippewacounty.com)

# 950k

 PAGE VIEWS IN 2023

TOP STATES

1. WISCONSIN
2. ILLINOIS
3. MINNESOTA
4. TEXAS
5. IOWA



MORE THAN

# 2,500

WELCOME BAGS

**1,650**  
VISITOR  
PACKET  
REQUESTS  
MAILED



VISITOR CENTER

MORE THAN

# 1,100

WALK-INS

